

IS : 9640 - 1980
(Reaffirmed 2002)
Edition 1.2
(1993-02)

Indian Standard
**SPECIFICATION FOR
SPLIT SPOON SAMPLER**
(Incorporating Amendment Nos. 1 & 2)

UDC 624.131.381 : 620.1.05

© BIS 2004

BUREAU OF INDIAN STANDARDS
MANAK BHAVAN, 9 BAHADUR SHAH ZAFAR MARG
NEW DELHI 110002

Price Group 2

Indian Standard

SPECIFICATION FOR SPLIT SPOON SAMPLER

Soil Engineering and Rock Mechanics Sectional Committee, BDC 23

Chairman

DR JAGDISH NARAIN

Representing

University of Roorkee, Roorkee

Members

ADDITIONAL DIRECTOR, IRI	Irrigation Department, Government of Bihar, Patna
ADDITIONAL DIRECTOR RESEARCH (F. E.), RDSO	Ministry of Railways
DEPUTY DIRECTOR RESEARCH (SOIL MECH), RDSO (<i>Alternate</i>)	
PROF ALAM SINGH	University of Jodhpur, Jodhpur
COL AVTAR SINGH	Engineer-in-Chief's Branch, Army Headquarters (Ministry of Defence)
LT-COL V. K. KANITKAR (<i>Alternate</i>)	
DR A. BANERJEE	Cemindia Co Ltd, Bombay
SHRI S. GUPTA (<i>Alternate</i>)	
DR R. K. BHANDARI	Central Building Research Institute, Roorkee
CHIEF ENGINEER (B & R)	Irrigation Department, Government of Punjab, Chandigarh
DR G. S. DHILLON (<i>Alternate</i>)	
SHRI M. C. DANDAVATE	The Concrete Association of India, Bombay
SHRI N. C. DUGGUL (<i>Alternate</i>)	
SHRI A. G. DASTIDAR	In personal capacity (5 Hungerford Street, 12/1 Hungerford Court, Calcutta 700017)
DR G. S. DHILLON	Indian Geotechnical Society, New Delhi
DIRECTOR, IRI	Irrigation Department, Government of Uttar Pradesh, Roorkee
SHRI A. H. DIVANJI	Asia Foundations and Construction (P) Ltd, Bombay
SHRI A. N. JANGLE (<i>Alternate</i>)	
PROF GOPAL RANJAN	University of Roorkee, Roorkee
PROF GOPAL RANJAN	Institution of Engineers (India), Calcutta
DR SHASHI K. GULHATI	Indian Institute of Technology, New Delhi
DR G. B. RAO (<i>Alternate</i>)	

(Continued on page 2)

© BIS 2004

BUREAU OF INDIAN STANDARDS

This publication is protected under the *Indian Copyright Act* (XIV of 1957) and reproduction in whole or in part by any means except with written permission of the publisher shall be deemed to be an infringement of copyright under the said Act.

IS : 9640 - 1980

(Continued from page 1)

<i>Members</i>	<i>Representing</i>
SHRI O. P. MALHOTRA	Public Works Department, Union Territory of Chandigarh, Chandigarh
SHRI T. K. NATRAJAN PRESIDENT (AIIMDA)	Central Road Research Institute, New Delhi All India Instrument Mfrs & Dealers Association, Bombay
DEPUTY SECRETARY (AIIMDA) (<i>Alternate</i>)	
SHRI R. V. RANTHIDEVAN DEPUTY DIRECTOR (CSMRS) (<i>Alternate</i>)	Central Water Commission, New Delhi
RESEARCH OFFICER (B & RRL)	Public Works Department, Government of Punjab, Chandigarh
SHRI K. R. SAXENA	Public Works Department, Government of Andhra Pradesh, Hyderabad
SECRETARY DEPUTY SECRETARY (<i>Alternate</i>)	Central Board of Irrigation & Power, New Delhi
SHRI N. SIVAGURU SHRI D. V. SIKKA (<i>Alternate</i>)	Roads Wing (Ministry of Shipping and Transport)
SHRI K. S. SRINIVASAN SHRI SUNIL BERRY (<i>Alternate</i>)	National Buildings Organization, New Delhi
SUPERINTENDING ENGINEER (P & D) EXECUTIVE ENGINEER (SMRD) (<i>Alternate</i>)	PWD, Government of Tamil Nadu, Madras
SHRI S. D. VIDYARTHI DR B. L. DHAWAN (<i>Alternate</i>)	Public Works Department, Government of Uttar Pradesh, Lucknow
SHRI G. RAMAN, Director (Civ Engg)	Director General, ISI (<i>Ex-officio Member</i>)
	<i>Secretary</i> SHRI K. M. MATHUR Deputy Director (Civ Engg), ISI

Soil Testing Instrument and Equipment Subcommittee, EDC 23 : 6

<i>Convener</i>	
SHRI H. C. VERMA	Associated Instruments Manufacturers (I) Pvt Ltd, New Delhi
	<i>Members</i>
SHRI M. D. NAIR (<i>Alternate</i> to Shri H. C. Verma)	
COL AVTAR SINGH SHRI S. K. GUPTA (<i>Alternate</i>)	Engineer-in-Chief's Branch, Army Headquarters
DEPUTY DIRECTOR RESEARCH (SM) (RDSO)	Ministry of Railways
DIRECTOR (CSMRS) DEPUTY DIRECTOR (CSMRS) (<i>Alternate</i>)	Central Water Commission, New Delhi

(Continued on page 8)

Indian Standard

SPECIFICATION FOR SPLIT SPOON SAMPLER

0. FOREWORD

0.1 This Indian Standard was adopted by the Indian Standards Institution on 10 November 1980, after the draft finalized by the Soil Engineering and Rock Mechanics Sectional Committee had been approved by the Civil Engineering Division Council.

0.2 The Indian Standards Institution has already published a series of standards on methods of testing soils. It has been recognized that reliable and intercomparable test results can be obtained only with standard testing equipment capable of giving the desired level of accuracy. The Sectional Committee has, therefore, decided to bring out a series of specifications covering the requirements of equipment used for testing soils to encourage its development and manufacture in the country.

0.3 The equipment covered in this standard is used for conducting the *in situ* standard penetration test in soils covered in IS : 2131-1981*.

0.4 This edition 1.2 incorporates Amendment No. 1 (November 1984) and Amendment No. 2 (February 1993). Side bar indicates modification of the text as the result of incorporation of the amendments.

0.5 For the purpose of deciding whether a particular requirement of this standard is complied with, the final value, observed or calculated, expressing the result of a test or analysis, shall be rounded off in accordance with IS : 2-1960†. The number of significant places retained in the rounded off value should be the same as that of the specified value in this standard.

1. SCOPE

1.1 This standard covers the requirements of split spoon sampler used for conducting *in situ* standard penetration test in soils.

2. DIMENSIONS

2.1 Dimensions with tolerances of different component parts of this apparatus are given in Fig. 1 to 6. Except where tolerances are specifically mentioned against the dimensions, all dimensions shall be taken

*Method for standard penetration test for soils (*first revision*).

†Rules for rounding off numerical values (*revised*).

IS : 9640 - 1980

as nominal dimensions and tolerance shall be as given for medium class in IS : 2102 (Part 1)-1980*.

3. MATERIALS

3.1 The materials of construction of the different component parts shall be as given in Table 1.

TABLE 1 MATERIALS OF CONSTRUCTION OF DIFFERENT COMPONENT PARTS OF THE SPLIT SPOON SAMPLER

PART	MATERIALS	SPECIAL REQUIREMENTS	CONFORMING TO
Cutting shoe (see Fig. 2)	Mild steel, case-hardened	Cutting edge case hardened to 45 HRC, <i>Min</i>	IS : 4432-1977*
Head (see Fig. 3)	Mild steel, case-hardened	Smooth surface	IS : 4432-1967*
Body (see Fig. 4)	Mild steel	Smooth surface	IS : 513-1973†
Liner (see Fig. 5)	Brass pipe	Smooth surface	IS : 407-1966‡
Coupling (see Fig. 6)	Mild steel	To suit A-Type drill rods	IS : 1239 (Part I)-1973§

*Specification for case hardening steels.

†Specification for cold rolled carbon steel sheets (*second revision*).

‡Specification for brass tubes for general purposes (*second revision*).

§Specification for mild steel tubes, tubulars and other wrought steel fittings : Part I Mild steel tubes (*third revision*).

4. CONSTRUCTION

4.1 The split spoon sampler shall be constructed as per details given in Fig. 1 to 4 and 6. The split spoon sampler may also be provided with a liner in the body as per details given in Fig. 5 in which case it is called as composite sampler.

NOTE — The composite sampler is not used for the determination of N values.

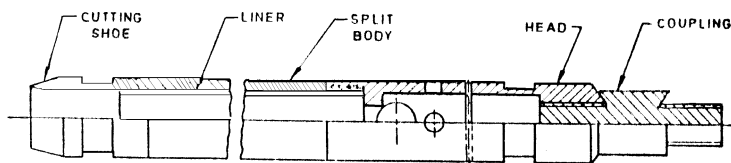
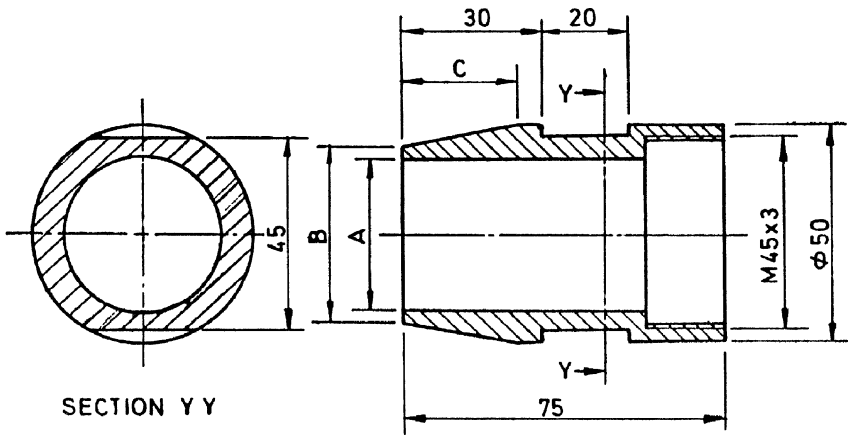


FIG. 1 ASSEMBLY OF SPLIT SPOON SAMPLER

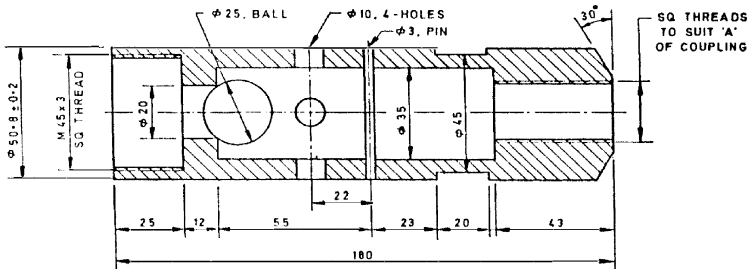
*General tolerance for dimensions and form and position: Part 1 General tolerances for linear and angular dimensions (*second revision*).



Type of Sampler	A (Dia)	B (Dia)	C
Without Liner	38 ± 0.2	41	20
With Liner	35 ± 0.2	38	27

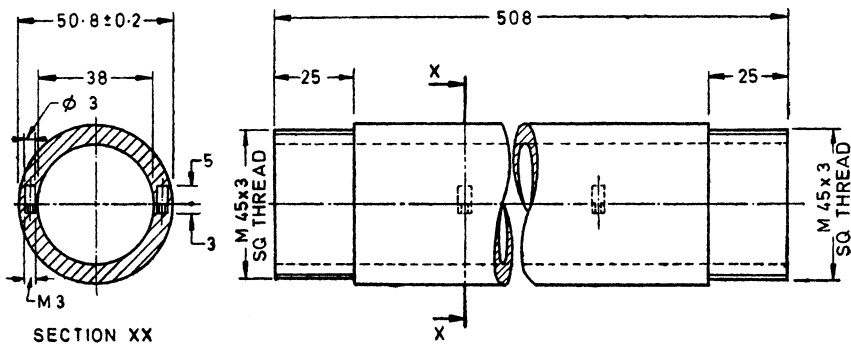
All dimensions in millimetres.

FIG. 2 CUTTING SHOE



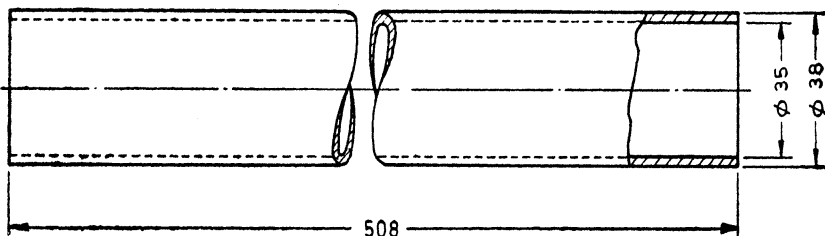
All dimensions in millimetres.

FIG. 3 HEAD



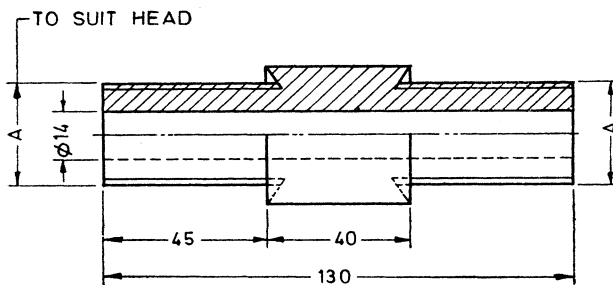
All dimensions in millimetres.

FIG. 4 SPLIT BODY (FOR USE WITH LINER)



All dimensions in millimetres.

FIG. 5 LINER



All dimensions in millimetres.

FIG. 6 COUPLING

5. MARKING

5.1 The following information shall be clearly and indelibly marked on each component of the equipment:

- a) The name of the manufacturer or his registered trade-mark or both;
- b) Date of manufacture; and
- c) Type (*see 4.1*).

5.1.1 The equipment may also be marked with the ISI Certification Mark.

NOTE — The use of the ISI Certification Mark is governed by the provisions of the Indian Standards Institution (Certification Marks) Act and the Rules and Regulations made thereunder. The ISI Mark on products covered by an Indian Standard conveys the assurance that they have been produced to comply with the requirements of that standard under a well-defined system of inspection, testing and quality control which is devised and supervised by ISI and operated by the producer. ISI marked products are also continuously checked by ISI for conformity to that standard as a further safeguard. Details of conditions under which a licence for the use of the ISI Certification Mark may be granted to manufacturers or processors, may be obtained from the Indian Standards Institution.

IS : 9640 - 1980

(Continued from page 2).

<i>Members</i>	<i>Representing</i>
SHRI H. K. GUHA	Geologists' Syndicate Pvt Ltd, Calcutta
SHRI A. BHATTACHARYA (<i>Alternate</i>)	
SHRI A. K. GUPTA	Saraswati Engineering Agency, Roorkee
SHRI RAKESH GOEL (<i>Alternate</i>)	
DR B. R. MALHOTRA	Central Road Research Institute (CSIR), New Delhi
DR P. NANDAKUMARAN	University of Roorkee, Roorkee
SHRI S. PATHANIA	Central Scientific Instruments Organization (CSIR), Chandigarh
SHRI Y. C. SOOD (<i>Alternate</i>)	
SHRI S. G. PRASAD	Industrial Electronics Pvt Ltd, Bangalore
SHRI H. S. DAHELE (<i>Alternate</i>)	
DR T. RAMAMURTHY	Indian Institute of Technology, New Delhi
SHRI RESHAM SINGH	Hydraulic & Engineering Instruments Co, New Delhi
SHRI JATINDER SINGH (<i>Alternate</i>)	
DR V. SREENIVASULU	Central Building Research Institute (CSIR), Roorkee

Bureau of Indian Standards

BIS is a statutory institution established under the *Bureau of Indian Standards Act, 1986* to promote harmonious development of the activities of standardization, marking and quality certification of goods and attending to connected matters in the country.

Copyright

BIS has the copyright of all its publications. No part of these publications may be reproduced in any form without the prior permission in writing of BIS. This does not preclude the free use, in the course of implementing the standard, of necessary details, such as symbols and sizes, type or grade designations. Enquiries relating to copyright be addressed to the Director (Publications), BIS.

Review of Indian Standards

Amendments are issued to standards as the need arises on the basis of comments. Standards are also reviewed periodically; a standard along with amendments is reaffirmed when such review indicates that no changes are needed; if the review indicates that changes are needed, it is taken up for revision. Users of Indian Standards should ascertain that they are in possession of the latest amendments or edition by referring to the latest issue of 'BIS Catalogue' and 'Standards : Monthly Additions'.

This Indian Standard has been developed by Technical Committee : BDC 23 and amended by CED 23

Amendments Issued Since Publication

Amend No.	Date of Issue
Amd. No. 1	November 1984
Amd. No. 2	February 1993

BUREAU OF INDIAN STANDARDS

Headquarters:

Manak Bhavan, 9 Bahadur Shah Zafar Marg, New Delhi 110002.
Telephones: 323 01 31, 323 33 75, 323 94 02

Telegrams: Manaksanstha
(Common to all offices)

Regional Offices:

	Telephone
Central : Manak Bhavan, 9 Bahadur Shah Zafar Marg NEW DELHI 110002	{ 323 76 17 323 38 41
Eastern : 1/14 C. I. T. Scheme VII M, V. I. P. Road, Kankurgachi KOLKATA 700054	{ 337 84 99, 337 85 61 337 86 26, 337 91 20
Northern : SCO 335-336, Sector 34-A, CHANDIGARH 160022	{ 60 38 43 60 20 25
Southern : C. I. T. Campus, IV Cross Road, CHENNAI 600113	{ 235 02 16, 235 04 42 235 15 19, 235 23 15
Western : Manakalaya, E9 MIDC, Marol, Andheri (East) MUMBAI 400093	{ 832 92 95, 832 78 58 832 78 91, 832 78 92
Branches : AHMEDABAD. BANGALORE. BHOPAL. BHUBANESHWAR. COIMBATORE. FARIDABAD. GHAZIABAD. GUWAHATI. HYDERABAD. JAIPUR. KANPUR. LUCKNOW. NAGPUR. NALAGARH. PATNA. PUNE. RAJKOT. THIRUVANANTHAPURAM. VISHAKHAPATNAM	