

“पुनर्पठ १९९५”  
“RE-AFFIRMED 1995”

IS 12979 : 1990

भारतीय मानक

रैखिक संकुचन साँचों की विशिष्टि

*Indian Standard*

MOULD FOR DETERMINATION OF LINEAR  
SHRINKAGE—SPECIFICATION

UDC 624.131.434 : 620.1.05

© BIS 1991

BUREAU OF INDIAN STANDARDS  
MANAK BHAVAN, 9 BAHADUR SHAH ZAFAR MARG  
NEW DELHI 110002

January 1991

Price Group 1

## FOREWORD

This Indian Standard was adopted by the Bureau of Indian Standards, after the draft finalized by the Soil and Soil Engineering Sectional Committee had been approved by the Civil Engineering Division Council.

The equipment covered in this standard is meant to be used as a part of the apparatus for determination of the linear shrinkage of remoulded soils as covered in IS 2720 (Part 20) : 1966 'Methods of test for soil : Part 20 Determination of linear shrinkage'.

For the purpose of deciding whether a particular requirement of this standard is complied with, the final value, observed or calculated, expressing the result of a test or analysis, shall be rounded off in accordance with IS 2 : 1960 'Rules for rounding off numerical values (*revised*)'. The number of significant places retained in the rounded off value should be the same as that of the specified value in this standard.

## Indian Standard

# MOULD FOR DETERMINATION OF LINEAR SHRINKAGE — SPECIFICATION

### 1 SCOPE

1.1 This standard covers general requirements, materials and dimensions for moulds used as part of the apparatus for the determination of linear shrinkage of remoulded soils.

### 2 REFERENCES

2.1 The following Indian Standards are necessary adjuncts to this standard:

IS No.	Title
292 : 1983	Leaded brass ingots and castings ( <i>second revision</i> )
2102 (Part 1) : 1980	General tolerances for dimensions and form and position: Part 1 General tolerances for linear and angular dimensions ( <i>second revision</i> )

### 3 GENERAL REQUIREMENTS

3.1 The mould shall consist of the following (*see Fig. 1*):

a) Body

b) End Plates — 2 No.

c) Securing screws — 4 No.

### 4 MATERIALS

4.1 The materials for construction of the different component parts of the mould, namely, body, plates and screws shall conform to IS 292 : 1983.

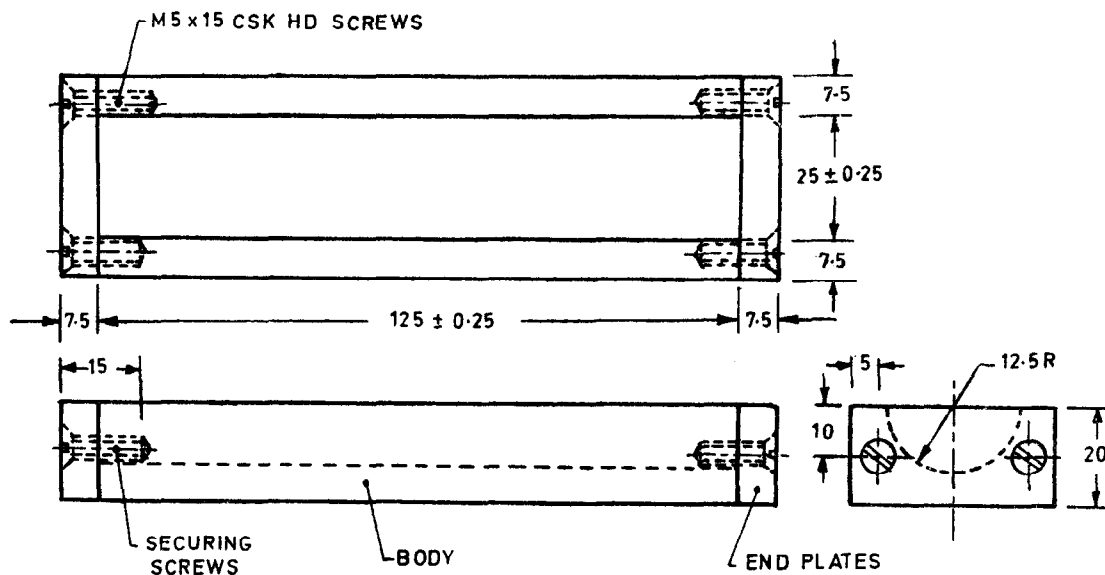
### 5 DIMENSIONS

5.1 The dimensions of the component parts of the mould shall be as detailed in Fig. 1. The tolerances on the dimensions wherever not mentioned in Fig. 1 shall be as given in IS 2102 (Part 1) : 1980 and shall be medium class.

### 6 MARKING

6.1 The following information shall be clearly and indelibly marked on each mould:

- a) Indication of the source of manufacturer; and
- b) Batch number.



All dimensions in millimetres.

FIG. 1 MOULD FOR LINEAR SHRINKAGE

### **Standard Mark**

The use of the Standard Mark is governed by the provisions of the *Bureau of Indian Standards Act, 1986* and the Rules and Regulations made thereunder. The Standard Mark on products covered by an Indian Standard conveys the assurance that they have been produced to comply with the requirements of that standard under a well defined system of inspection, testing and quality control which is devised and supervised by BIS and operated by the producer. Standard marked products are also continuously checked by BIS for conformity to that standard as a further safeguard. Details of conditions under which a licence for the use of the Standard Mark may be granted to manufacturers or producers may be obtained from the Bureau of Indian Standards.

## Bureau of Indian Standards

BIS is a statutory institution established under the *Bureau of Indian Standards Act, 1986* to promote harmonious development of the activities of standardization, marking and quality certification of goods and attending to connected matters in the country.

### Copyright

BIS has the copyright of all its publications. No part of these publications may be reproduced in any form without the prior permission in writing of BIS. This does not preclude the free use, in the course of implementing the standard, of necessary details, such as symbols and sizes, type or grade designations. Enquiries relating to copyright be addressed to the Director (Publications), BIS.

### Revision of Indian Standards

Indian Standards are reviewed periodically and revised, when necessary and amendments, if any, are issued from time to time. Users of Indian Standards should ascertain that they are in possession of the latest amendments or edition. Comments on this Indian Standard may be sent to BIS giving the following reference:

Doc : No. CED 23 (4451)

### Amendments Issued Since Publication

Amend No.	Date of Issue	Text Affected

## BUREAU OF INDIAN STANDARDS

### Headquarters:

Manak Bhavan, 9 Bahadur Shah Zafar Marg, New Delhi 110002  
Telephones : 331 01 31, 331 13 75

Telegrams : Manaksanstha  
( Common to all Offices )

### Regional Offices:

Central : Manak Bhavan, 9 Bahadur Shah Zafar Marg NEW DELHI 110002	{ 331 01 31 331 13 75
Eastern : 1/14 C.I.T. Scheme VII M, V.I.P. Road, Maniktola CALCUTTA 700054	37 86 62
Northern : SCO 445-446, Sector 35-C, CHANDIGARH 160036	2 18 43
Southern : C.I.T. Campus, IV Cross Road, MADRAS 600113	41 29 16
Western : Manakalaya, E9 MIDC, Marol, Andheri (East) BOMBAY 400093	6 32 92 95

Branches : AHMADABAD. BANGALORE. BHOPAL. BHUBANESHWAR.  
COIMBATORE. FARIDABAD. GHAZIABAD. GUWAHATI.  
HYDERABAD. JAIPUR. KANPUR. PATNA. THIRUVANANTHAPURAM.