

IS : 11593 - 1986

REAFFIRMED

— 75

Indian Standard
SPECIFICATION FOR
SHEAR BOX (LARGE) FOR
TESTING OF SOILS

UDC 624·131·439·5·05



© Copyright 1986

INDIAN STANDARDS INSTITUTION
MANAK BHAVAN, 9 BAHADUR SHAH ZAFAR MARG
NEW DELHI 110002

Indian Standard

SPECIFICATION FOR SHEAR BOX (LARGE) FOR TESTING OF SOILS

Soil Engineering Sectional Committee, BDC 23

<i>Members</i>	<i>Representing</i>
ADDITIONAL DIRECTOR (GE)	Ministry of Railways
JOINT DIRECTOR (GE) (<i>Alternate</i>)	
DR ALAM SINGH	University of Jodhpur, Jodhpur
SHRI B. ANJIAH	Engineering Research Laboratories, Government of Andhra Pradesh, Hyderabad
DR R. K. BHANDARI	Central Building Research Institute (CSIR), Roorkee
SHRI S. K. KANSAL (<i>Alternate</i>)	
CHIEF ENGINEER (IPRI)	Irrigation Department, Government of Punjab, Chandigarh
DIRECTOR (Dam) (<i>Alternate</i>)	
DR T. N. CHOJER	Public Works Department, Government of Uttar Pradesh, Lucknow
DEPUTY DIRECTOR (R) (<i>Alternate</i>)	
SHRI A. VERGHESE CHUMMAR	F. S. Engineers Private Limited, Madras
SHRI C. S. DABKE	Howe (India) Private Limited, New Delhi
SHRI G. V. MURTHY (<i>Alternate</i>)	
SHRI A. G. DASTIDAR	In personal capacity (5 Hungerford Court, 12/1, Hungerford Street, Calcutta)
DIRECTOR (IRI)	Irrigation Department, Government of Uttar Pradesh, Roorkee
SHRI A. H. DIVANJI	Asia Foundations and Construction (Private) Limited, Bombay
SHRI A. N. JANGLE (<i>Alternate</i>)	
DIRECTOR	Central Soil and Materials Research Station, New Delhi
DEPUTY DIRECTOR (<i>Alternate</i>)	
SHRI N. V. DE-SOUSA	Cemindia Company Limited, Bombay
DR GOPAL RANJAN	University of Roorkee, Roorkee; and Institute of Engineers (India), Calcutta
SHRI M. IYENGAR	Engineers India Limited, New Delhi
SHRI ASHOK K. JAIN	G. S. Jain and Associates, New Delhi
SHRI VIJAY K. JAIN (<i>Alternate</i>)	

(Continued on page 2)

© Copyright 1986

INDIAN STANDARDS INSTITUTION

This publication is protected under the *Indian Copyright Act* (XIV of 1957) and reproduction in whole or in part by any means except with written permission of the publisher shall be deemed to be an infringement of copyright under the said Act.

(Continued from page 1)

<i>Members</i>	<i>Representing</i>
SHRI A. V. S. R. MURTY	India Geotechnical Society, New Delhi
SHRI T. K. NATARAJAN	Central Road Research Institute (CSIR), New Delhi
SHRI RANJIT SINGH	Ministry of Defence (R & D)
SHRI V. B. GHORPADE (<i>Alternate</i>)	
DR G. V. RAO	Indian Institute of Technology, New Delhi
DR K. K. GUPTA (<i>Alternate</i>)	
RESEARCH OFFICER (B & RRL)	Public Works Department, Government of Punjab, Chandigarh
SECRETARY	Central Board of Irrigation and Power, New Delhi
DIRECTOR (C) (<i>Alternate</i>)	
SHRI N. SIVAGURU	Ministry of Shipping and Transport (Roads Wing)
SHRI U. JAYAKODI (<i>Alternate</i>)	
SHRI K. S. SRINIVASAN	National Buildings Organization, New Delhi
SHRI SUNIL BERRY (<i>Alternate</i>)	
DR N. SOM	Jadavpur University, Calcutta
SHRI N. SUBRAMANYAM	Karnataka Engineering Research Station, Government of Karnataka, Krishnarajasagar
COL R. R. SUDHINDRA	Ministry of Defence (Engineer-in-Chief's Branch)
SHRI S. S. JOSHI (<i>Alternate</i>)	
SUPERINTENDING ENGINEER (P & D)	Public Works Department, Government of Tamil Nadu, Madras
EXECUTIVE ENGINEER (SMRD) (<i>Alternate</i>)	
*SHRI H. C. VERMA	All India Instrument Manufacturers and Dealers Association, Bombay
SHRI H. K. GUHA (<i>Alternate</i>)	
SHRI G. RAMAN, Director (Civ Engg)	Director General, ISI (<i>Ex-officio Member</i>)

Secretary

SHRI K. M. MATHUR
Joint Director (Civ Engg), ISI

Soil Testing Instruments and Equipment Subcommittee, BDC 23 : 6

Convener

SHRI H. C. VERMA
Associated Instruments Manufacturers (India)
Private Limited, New Delhi

Members

SHRI M. D. NAIR (*Alternate to*
Shri H. C. Verma)
DIRECTOR (CSMRS)
DEPUTY DIRECTOR (CSMRS) (*Alternate*)

Central Soil and Materials Research Station,
New Delhi

(Continued on page 12)

*Shri Verma acted as Chairman in the meeting in which this Indian Standard was finalized.

Indian Standard
SPECIFICATION FOR
SHEAR BOX (LARGE) FOR
TESTING OF SOILS

0. FOREWORD

0.1 This Indian Standard was adopted by the Indian Standards Institution on 18 March 1986, after the draft finalized by the Soil Engineering Sectional Committee had been approved by the Civil Engineering Division Council.

0.2 The Indian Standards Institution has already published a series of standards on methods of testing soils. It has been recognized that reliable and intercomparable test results can be obtained only with standard testing equipment capable of giving the desired level of accuracy. Series of Indian Standards covering the specifications of equipments used for testing soils are therefore being formulated to encourage their development and manufacture in the country.

0.3 The equipment covered in this standard is used as a part of the assembly for the equipment used for the laboratory determination of shear strength of the soil [*see IS : 2720 (Part 39/Sec 1) - 1977**].

0.4 In reporting the result of a test or analysis made in accordance with this standard, if the final value, observed or calculated, is to be rounded off, it shall be done in accordance with IS : 2 - 1960†.

1. SCOPE

1.1 The equipment covered in this standard is used as a part of the assembly for the equipments used for laboratory determination of direct shear strength of the soil material with particle size up to 25 mm, that is, soils containing moorums, sands, gravels and other aggregates.

2. GENERAL REQUIREMENTS

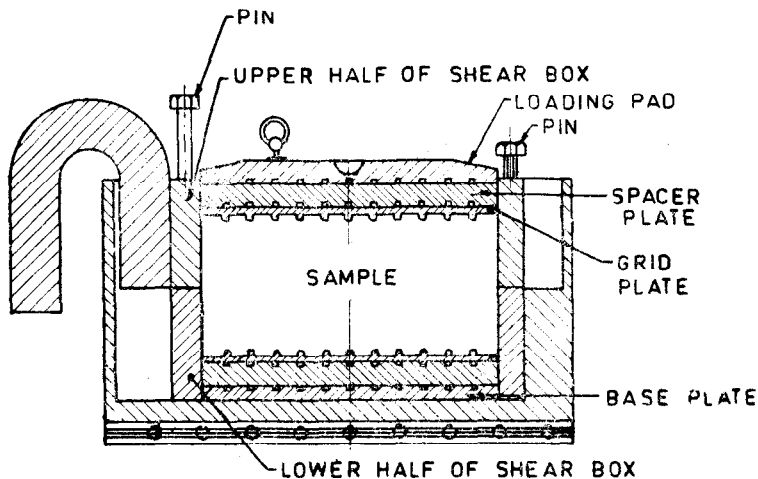
2.1 The shear box shall consist of the following (*see Fig. 1*):

- a) Upper and lower parts of the shear box coupled together with two pins,

*Methods of test for soils : Part 39 Direct shear test for soils containing gravel, Section 1 Laboratory test.

†Rules for rounding off numerical values (*revised*).

- b) Grid plates — 2 pairs,
- c) Spacer plates,
- d) Base plate,
- e) Loading pad, and
- f) Water jacket.



All dimensions in millimetres.

FIG. 1 SHEAR BOX (LARGE) ASSEMBLY

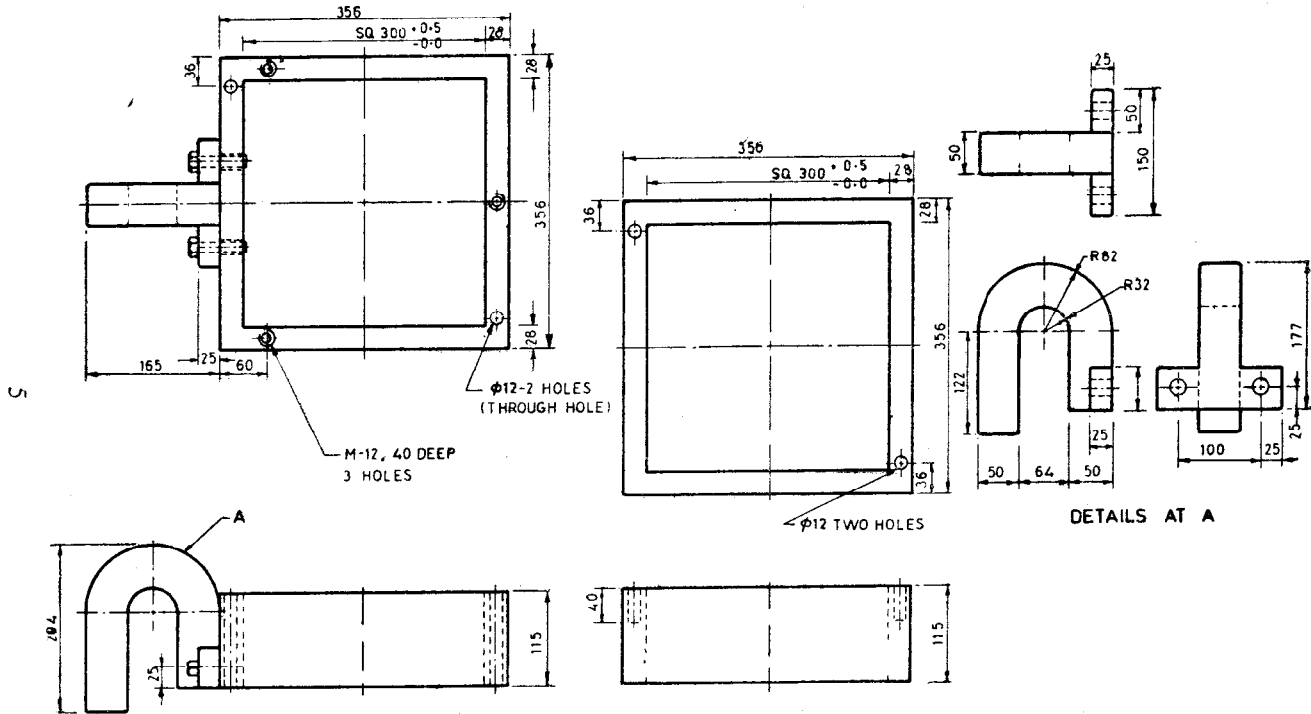
3. MATERIALS

3.1 The material used for the construction of the different component of shear box shall be as given in Table 1.

TABLE 1 MATERIALS OF CONSTRUCTION OF DIFFERENT COMPONENTS PARTS OF SHEAR BOX

Sl No.	COMPONENT	MATERIAL	REFERENCE TO INDIAN STANDARD
i)	Upper and lower parts of shear box	Mild Steel	IS : 513-1973*
ii)	Grid plates—2 pairs	„	„
iii)	Spacer plates	„	„
iv)	Base plate	„	„
v)	Loading pad	„	„
vi)	Water jacket	„	„

*Specification for cold rolled carbon steel sheets (*second revision*).

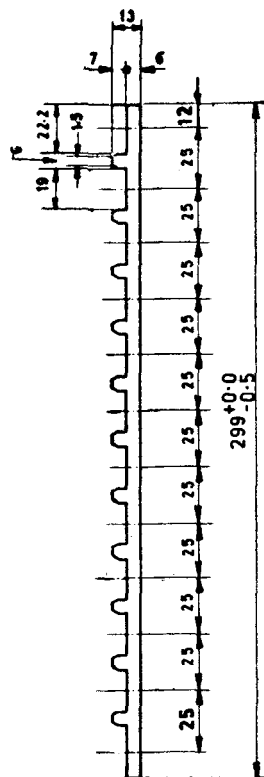
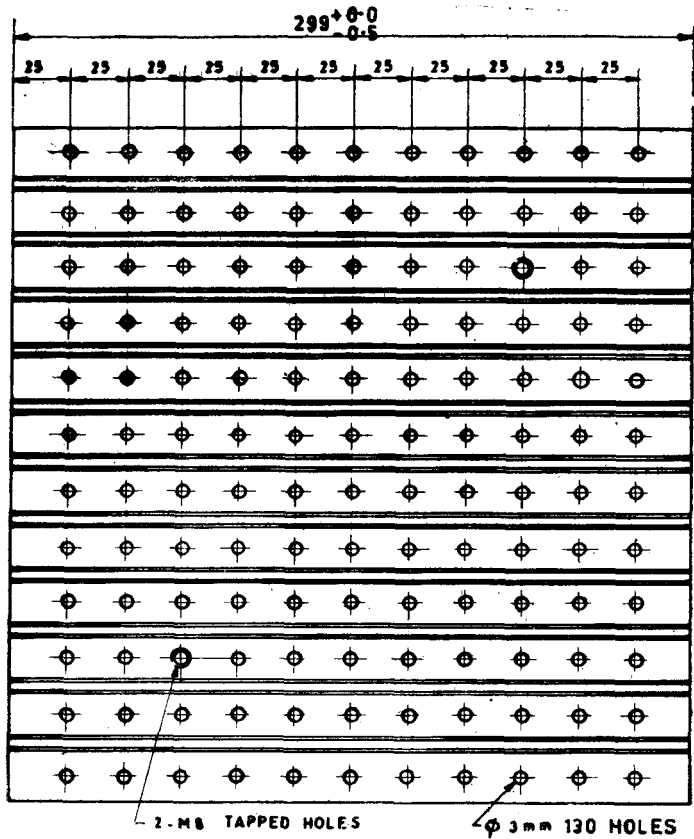


2A Upper Half of Shear Box

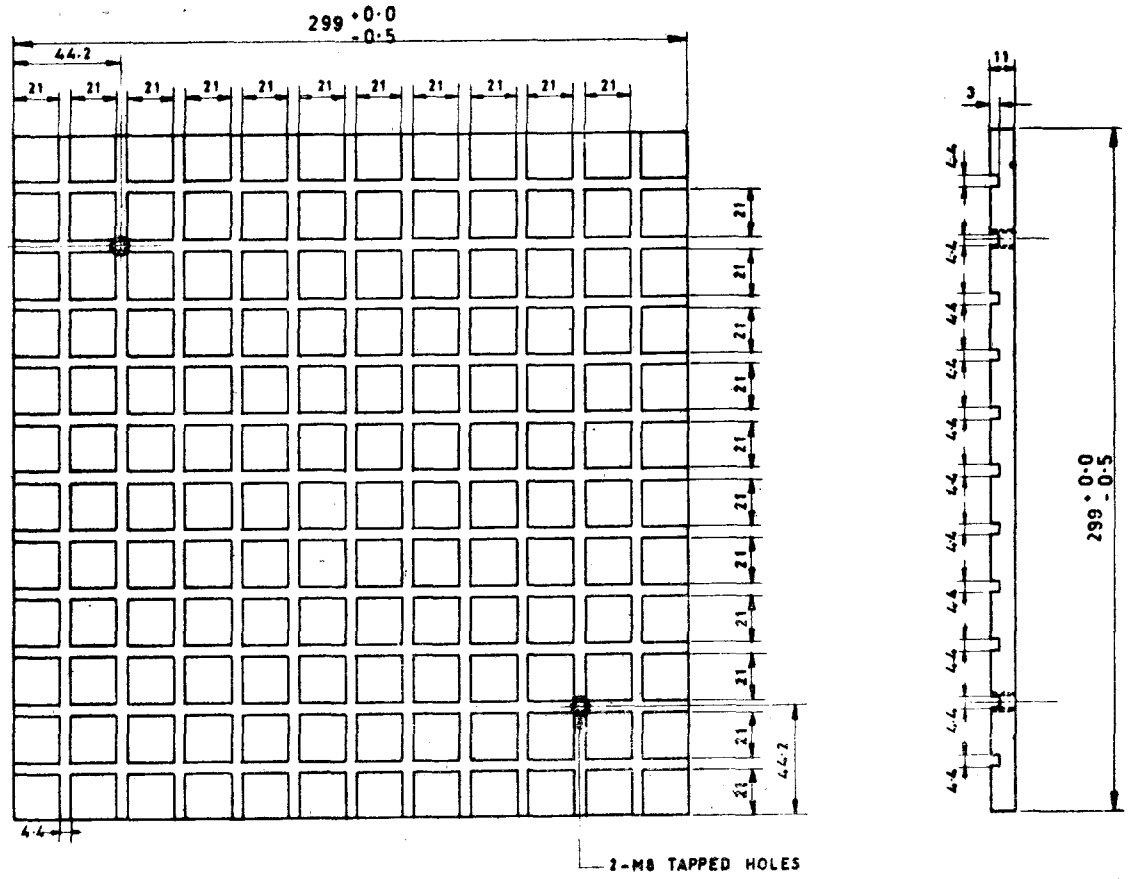
2B Lower Half of Shear Box

All dimensions in millimetres.

FIG. 2 DETAILS OF UPPER AND LOWER HALVES OF SHEAR BOX

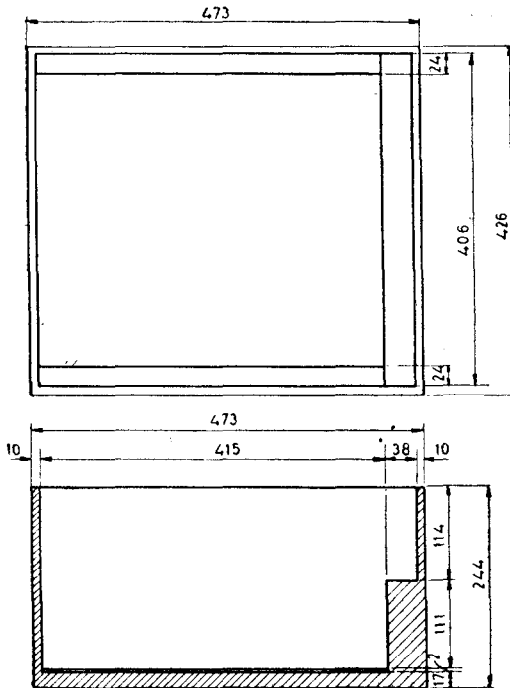


All dimensions in millimetres.
 FIG. 4 GRID PLATE

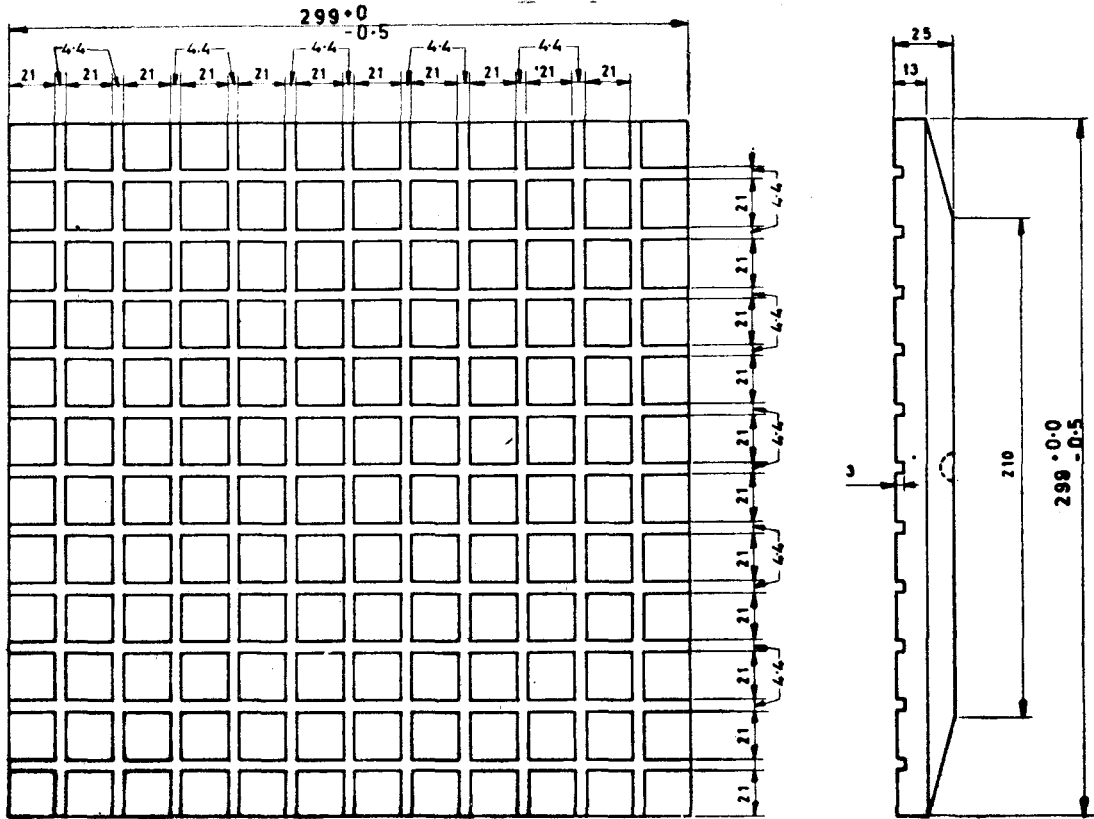


All dimensions in millimetres.

FIG. 5 BASE PLATE



All dimensions in millimetres.
FIG. 6 WATER JACKET



All dimensions in millimetres.

FIG. 7 LOADING PAD

4. SHAPE AND DIMENSIONS

4.1 The shape and dimensions of the various components of the shear box shall be as given in Fig. 2 to 7. The tolerance to the dimensions shall be as given in IS : 2102 (Part 1) - 1980* and shall be of medium class.

5. MARKING

5.1 The following information shall be clearly and indelibly marked on each component of equipment:

- a) Name of the manufacturer or his registered trade-mark; and
- b) Date of manufacture.

5.1.1 The equipment may also be marked with the ISI Certification Mark.

NOTE — The use of the ISI Certification Mark is governed by the provisions of the Indian Standards Institution (Certification Marks) Act and the Rules and Regulations made thereunder. The ISI Mark on products covered by an Indian Standard conveys the assurance that they have been produced to comply with the requirements of that standard under a well-defined system of inspection, testing and quality control which is devised and supervised by ISI and operated by the producer. ISI marked products are also continuously checked by ISI for conformity to that standard as a further safeguard. Details of conditions under which a licence for the use of the ISI Certification Mark may be granted to manufacturers or processors may be obtained from the Indian Standards Institution.

*General tolerances for dimensions and form and position : Part 1 General tolerances for linear and angular dimensions (*second revision*).

(Continued from page 2)

Members

SHRI H. K. GUHA
SHRI A. BHATTACHARYA (*Alternate*)
DR S. C. HANDA
SHRI P. K. JAIN (*Alternate*)
SHRI VIJAY K. JAIN
DR B. R. MALHOTRA
SHRI S. K. MITRA
BRIG M. K. PAUR
SHRI M. P. SHUKLA (*Alternate*)
DR T. RAMAMURTHY
DR G. V. RAO (*Alternate*)
SHRI S. VENKATESAN
SHRI Y. PANDEY (*Alternate*)

Representing

Geologists Syndicate Private Limited, Calcutta
University of Roorkee, Roorkee
G. S. Jain Associates, New Delhi
Central Road Research Institute (CSIR),
New Delhi
K. N. Dadina Foundation Engineers, Calcutta
Ministry of Defence (Engineer-in-Chief's
Branch)
Indian Institute of Technology, New Delhi
Central Building Research Institute (CSIR),
Roorkee